

# BLOSSOM LANDING

Single Family & Townhomes  
Rooftop Terraces  
Yards

**SOLD OUT!**

from  
upper **\$500s**



*Farb* **FARB  
HOMES**



**CitiQuest**  
PROPERTIES HOUSTON

Debbie Hagan  
281-796-4911

[www.BlossomLanding.com](http://www.BlossomLanding.com)

				Roof Terrace Faces:
5325 Blossom	Lot #1	SOLD	Plan C (R)**	North
5323 Blossom	Lot #2	SOLD	Plan C (R)**	North
5321 Blossom	Lot #3	SOLD	Plan D	Blossom
5305 Blossom	Lot #4	SOLD	Plan E	Blossom / East
5307 Blossom	Lot #5	SOLD	Plan A(R)	East
5309 Blossom	Lot #6	SOLD	Plan A(L)	East
5311 Blossom	Lot #7	SOLD	Plan A(L)	East
5313 Blossom	Lot #8	SOLD	Plan B(R)	East
5315 Blossom	Lot #9	SOLD	Plan B(R)	East
5317 Blossom	Lot #10	SOLD	Plan B(R)	East
5319 Blossom	Lot #11	SOLD	Plan B(L)	East

\* per developer \*\* elevator ready  
 Single Family: Lot 1, 2, 4, 5, 6, 7  
 Townhomes: Lot 3, 8, 9, 10, 11

## FEATURES

### GENERAL DESCRIPTION

- Designed by award winning architects Sullivan, Steven, Henry, Oggero Associates
- Interior is approximately 2430 to 2698 sf per builder
- 3 Bedrooms/3.5 Baths
- Oversized 2-car garage with epoxy finish & keyless entry
- Blend of single family and townhomes all with panoramic view of city skyline from 4th floor roof terrace
- No maintenance fees
- Restoration Hardware light fixture package thruout interiors
- Moen Plumbing fixtures
- Extensive millwork
- 4" Oak plank hardwoods on all stairways
- Lots 1 & 2 elevator capable
- Yard space

### FIRST FLOOR

- Divided light Mahogany front door
- Italian Carrara marble entry
- Double doors to downstairs bedroom/study with generous walk-in closet. Perfect for home office or roommate.
- Full bath with limestone counter
- French doors leading to the yard space

### SECOND FLOOR

- Solid 4" oak wood flooring throughout

#### Kitchen

- 1x4 Oak Plank floors
- Italian Carrara marble countertops
- Beveled subway tile backsplash
- Expansive kitchen island with extended counter top for comfortable seating and entertaining
- Stainless Steel Thermador 6 burner professional grade gas range and dishwasher
- Floating stainless vent hood
- Sharp Stainless Steel Microwave
- Dry bar with wine cooler
- Midcontinent furniture grade cabinets featuring soft close drawers/doors and dove tail construction, under cabinet lighting

#### Living/Dining Room

- Open concept with two sets of french Mahogany doors leading to the balcony which runs the width of the home

- Pre-wired for surround sound theater system
- Powder room with pedestal sink and Moen fixture
- Beveled top subway tile surround
- Carrara penny tile mosaic flooring

### THIRD FLOOR

#### Master Suite

- Designer grade carpet
- Operable French door with awnings (per plan)
- Large walk in closets with extensive built ins and seasonal pull downs
- Master bath with dual vanities, large marble shower with corner bench, oversized shower head and frameless glass enclosure, 6' whirlpool tub

#### Guest Bedroom

- Spacious walk-in closet
- Full sized bathroom features Crema Marfil Marble counters and Moen plumbing fixtures

### FOURTH FLOOR

- Rooftop terrace with skyline views
- Gas and water connections
- Extra storage in floored attic
- Large unfinished mechanical room

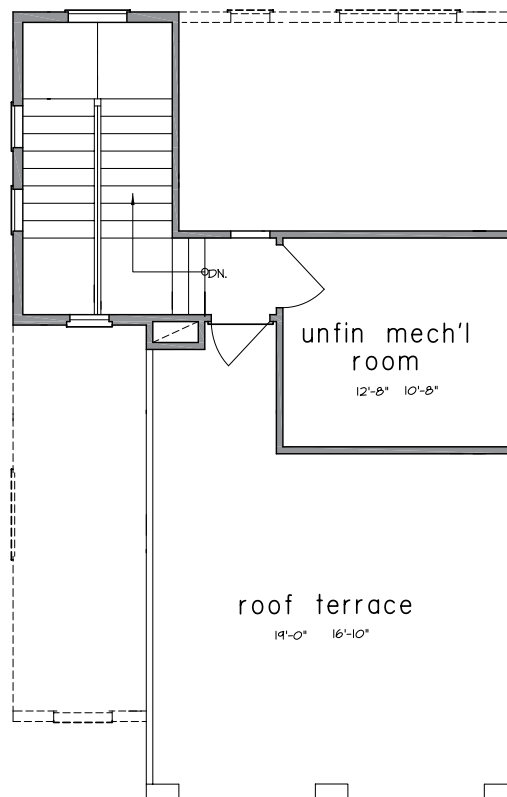
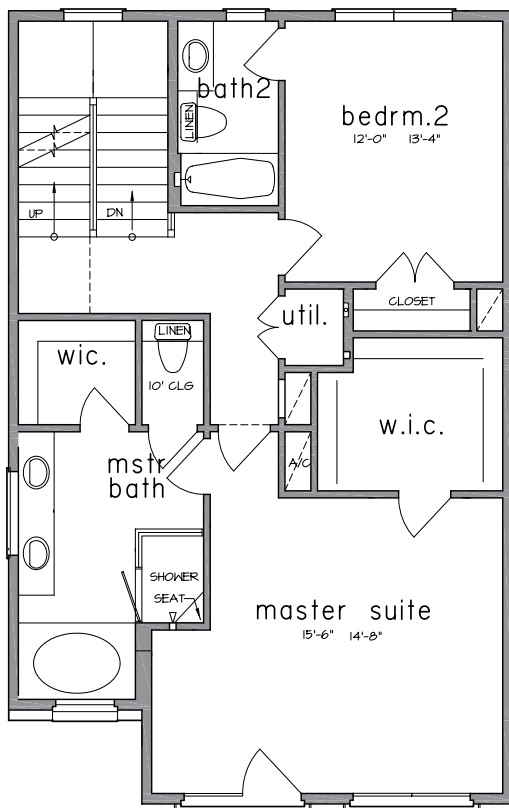
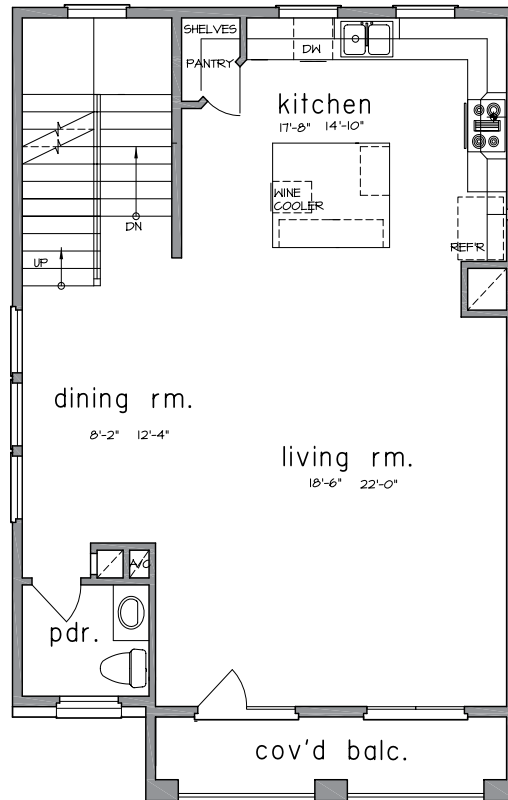
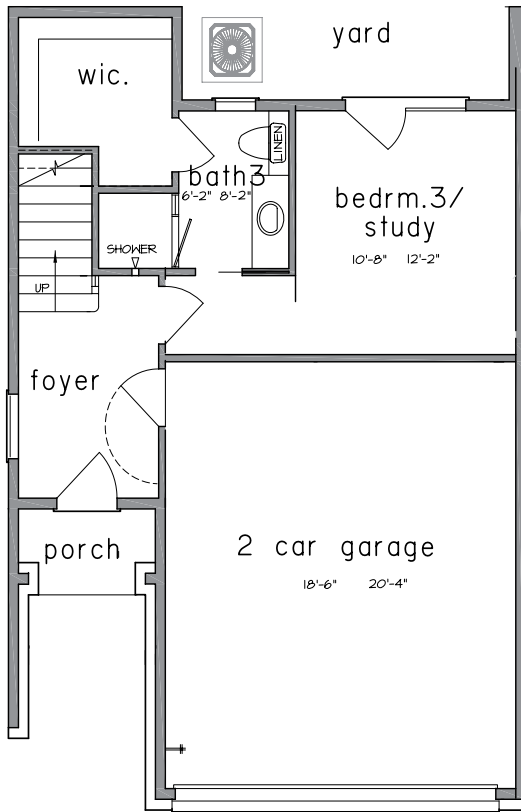
### BUILDING SPECIFICATIONS

- Dual paned RAM insulated glass windows
- Structural engineered foundation constructed on a compact select fill pad
- RUUD HVAC 3 zone 14 seer high efficiency A/C and low cost gas heating
- R-19 insulation in exterior walls and R-30 insulation in attic
- Seamless gutters
- 11' & 12' ceiling heights (per plan)
- 2x6 wall construction which provides extra insulation and lowers power bills
- 50 gallon gas water heater
- ACES Warranty included. 1 year on all mechanical systems; 10 year on structure

### EXTERIOR

- All homes with ornamental iron fencing and landscaped entries
- Conventional three coat stucco system & St. Joe inspired brick
- Integrated stamped ebonized concrete drives & walks

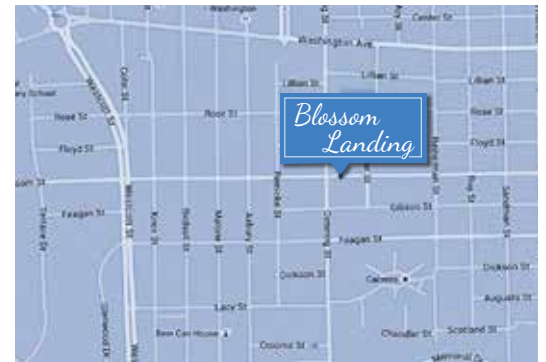
PLAN B(R) *Plan B(L) is the reverse of Plan B(R)*





## RICE MILITARY

Less than 8 minutes from Downtown and 8 minutes from the Galleria, Rice Military is Houston's hot spot for places to live, perfectly located between River Oaks and 1-10. Washington Avenue, often referred to as "Restaurant Row" is home to some of Houston's latest and greatest restaurants. Only minutes away from Memorial Park and Buffalo Bayou, this is a great place to call home.



5323 Blossom — Lot 2  
**SOLD**  
3 Bed 3/1 Ba 2700 sf

5311 Blossom — Lot 7  
**SOLD**  
3 Bed 3/1 Ba 2467 sf

5321 Blossom — Lot 3  
**SOLD**  
3 Bed 3/1 Ba 2683 sf

5313 Blossom — Lot 8  
**SOLD**  
3 Bed 3/1 Ba 2430 sf

5305 Blossom — Lot 4  
**SOLD**  
3 Bed 3/1 Ba 2655 sf

5315 Blossom — Lot 9  
**SOLD**  
3 Bed 3/1 Ba 2430 sf

5307 Blossom — Lot 5  
**SOLD**  
3 Bed 3/1 Ba 2467 sf

5317 Blossom — Lot 10  
**SOLD**  
3 Bed 3/1 Ba 2430 sf

5309 Blossom — Lot 6  
**SOLD**  
3 Bed 3/1 Ba 2467 sf

5319 Blossom — Lot 11  
**SOLD**  
3 Bed 3/1 Ba 2430 sf

## THE DEVELOPER

Farb Homes has built a solid reputation building quality homes that satisfy their client's individual tastes. Farb Homes current developments include numerous projects in the Montrose, Rice Military and greater Heights areas. These homes feature open floor plans, scenic terraces and large walk-in closets. There are no maintenance fees associated with these homes.



For more info, call Debbie Hagan

281-796-4911

Debbie@cqhouston.com

www.BlossomLanding.com



No guarantee is made that the features, amenities, layouts, views, materials and facilities depicted by photos, renderings and/or sketches or otherwise described herein will be provided, or, if provided, will be of the same type, size or nature as depicted or described, and you shall not rely on the information contained herein. Renderings, photos and sketches may be inaccurate. The Developer may make modifications and changes to the project and information provided herein without notice.